



IMAGE 1 - HEAT DETECTOR



IMAGE 2 - SMOKE DETECTOR



IMAGE 3 - STROBE LIGHT



IMAGE 4 - BREAK GLASS UNIT



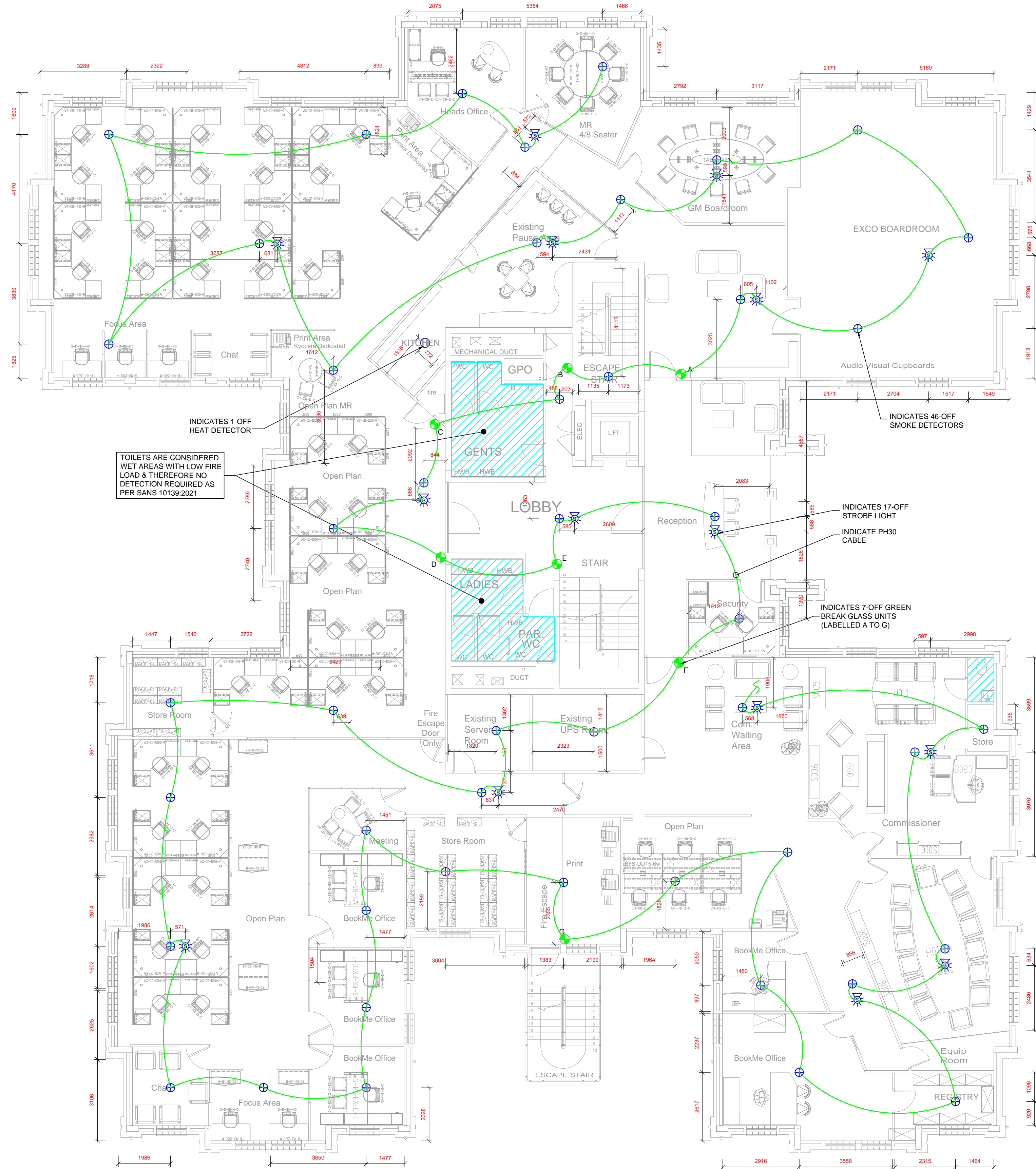
IMAGE 5 - SOUNDER & STROBE BEACON (RED)



IMAGE 7 - FIRE PANEL



IMAGE 8 - PH30 FIRE RATED CABLE



SECOND STOREY - PROPOSED DETECTION LAYOUT (Scale 1:100)

- FIRE DETECTION NOTES
FIRE DETECTION DESIGN IN ACCORDANCE WITH SANS 10139
- SPACE CLASSIFICATION = G1 - OFFICE
 - FLOOR AREA = 1125 m²
 - POPULATION = 1/SEAT = 153 PEOPLE
 - DETECTION CATEGORY = L1 SYSTEM
 - FIRE RESISTANT CABLES = PH30 IN ACCORDANCE WITH SANS 10139
 - AUDIBLE ALARM SOUND LEVEL = 65 DBA
 - WIRE WAYS = 25mm PVC THROUGHOUT C/W METAL SADDLES EVERY 500mm
 - THE FIRE DETECTION SYSTEM MUST BE INTERFACED WITH THE FOLLOWING
 - DUCTED A/C SYSTEM TO SHUT DOWN
 - FRESH AIR SYSTEM TO SHUT DOWN
 - SMOKE VENTILATION SYSTEM TO START
 - ACCESS CONTROLLED DOORS TO RELEASE
 - LIFT TO HOME UNDER A FIRE CONDITION

- SCOPE OF WORK
- SUPPLY AND INSTALL NEW DETECTION AND EVACUATION EQUIPMENT AS INDICATED.
 - 46-OFF NEW SMOKE DETECTORS
 - 2-OFF NEW HEAT DETECTORS
 - 4-OFF GREEN BREAK GLASS UNIT
 - 15-OFF STROBE LIGHTS WITH BUILT IN SOUNDER
 - COMPLETE A FUNCTIONALITY TEST TO ENSURE THE SYSTEM OPERATES SATISFACTORILY UNDER A FIRE CONDITION.
 - CONDUCT A SOUND LEVEL TEST FOR THE EVACUATION SYSTEM.
 - TRAIN OCCUPANTS ON THE SYSTEM INSTALLATION.

FIRE DETECTION LEGENDS & COUNT			
SYMBOL	REFERENCE	DESCRIPTION	QTY.
	SS	STROBE LIGHT WITH BUILT-IN SOUNDER	15
	SD	SMOKE DETECTOR	46
	HD	HEAT DETECTOR	1
	BGU	GREEN BREAK GLASS UNIT	7
		PH30 FIRE RATED CABLE	1065m
		Ø25mm CONDUIT LINK	533m

REVISIONS					
No	Date	Description	Rev By	Chk By	
A	2022/08/23	ISSUED FOR INFORMATION	T.E	H.R	

09 Plantanus Street
Kuilsvier
7580

Cell: (072) 948 4470
Tel: (021) 903 1407
Email: info@consultmech.co.za

PROJECT: LAHAE LA SARS - BLOCK A

DWG TITLE: BROOKLYN
DETECTION LAYOUT

DWG NUMBER: 21B09-D-601-03 REV: A

DESIGNED BY: S. MAFUYA SCALE: 1:100 @ A1

CHECKED BY: H.D ROUX ECSA NUMBER: 201070151

APPROVED BY: H.D ROUX ECSA NUMBER: 201070151

COPYRIGHT AND RIGHT OF REPRODUCTION OF THIS DRAWING OR ANY PORTION THEREOF IS RESERVED BY THE ENGINEERS

